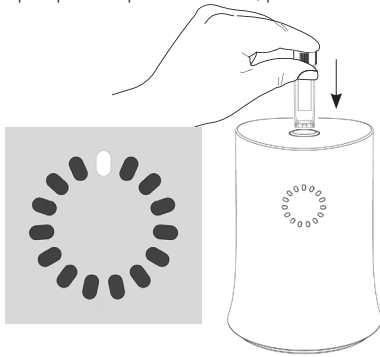


ThawSTAR® CFT1.5

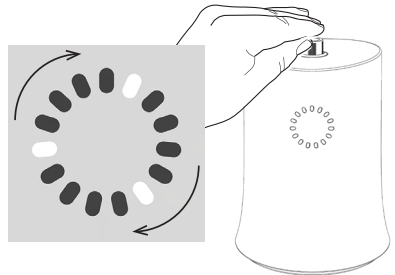
Quick Start Guide

Quick Start

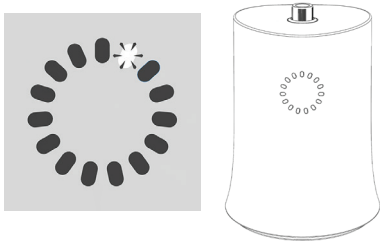
Upon power-up of instrument, please allow 5 minutes for instrument warm-up.



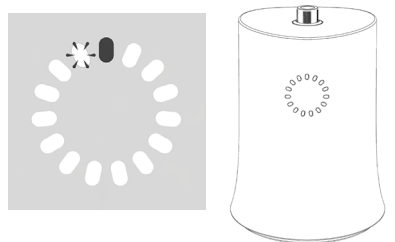
Instrument is warmed up and in "ready" state. Insert a clean, tightly capped frozen 1.5 mL cryogenic vial (below -70°C) containing up to 1.5 mL volume into the opening on the top of the instrument.



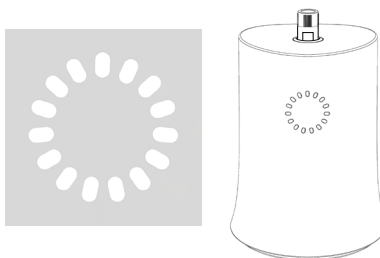
Push the top of the vial down gently until the instrument emits a deep dual tone. The vial will now remain in a depressed position.



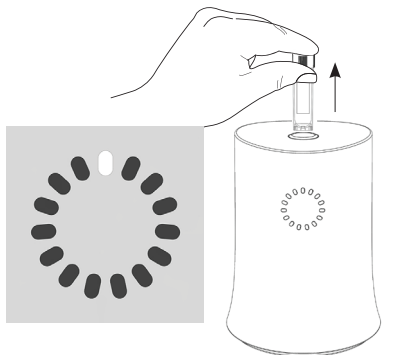
Beginning of solid to liquid phase change is detected by instrument.



Countdown of the last 10 seconds of the thawing process begins.



Upon thaw completion, the vial is raised approximately 1 cm (0.4 in).



Remove vial immediately and for a few seconds, manually agitate the vial gently from side to side to equilibrate the liquid temperature until no ice can be seen within the vial. Begin downstream protocol.

Error Codes



Error Code 2:

Failure to warm up properly; or other mechanical fault in the heating system.

Solution:

Check power source connection at back of instrument, cable connection to power adapter and the plug connection to the electrical outlet. Turn the instrument off and back on. If the instrument displays the same error code 2, contact BioLife Solutions technical support.



Error Code 3:

Vial too warm and/or already thawed.

Solution:

Gently remove vial that is too warm. Instrument will return to "ready" state and display a single light at the top.



Error Code 5:

Vial cannot be seated properly (e.g. too wide, too short, etc.).

Solution:

Gently remove the vial. Instrument will return to "ready" state and display a single light at the top. (1) Check for blockage in the vial grasping

mechanism. Invert instrument to gently shake out obstructions, if any. (2) Ensure that the thermal pads lining the internal heating blocks are intact and undamaged. (3) Ensure vial is within specifications. (4) Try to thaw frozen vial. If thermal pads are not intact and/or damaged, or if situation is still not resolved, contact BioLife Solutions technical support.



Error Code 7:

"Abandoned" vial left in instrument more than 15 seconds after thawing process is completed.

Solution:

Gently remove vial. Instrument will emit a single tone. Instrument will return to "ready" state and display a single light at the top.



Error Code 9:

Vial fails to rise after thaw process is finished.

Solution:

Grasp the vial cap only with fingers or forceps and rock vial gently to dislodge and remove from opening, taking care not to open the cap. Instrument will

return to "ready" state and display a single light at the top. Ensure that the thermal pads lining the internal heating blocks are intact and undamaged. *Note: If thermal pads are not intact and/or damaged, contact BioLife Solutions technical support. Avoid sticking forceps or other foreign objects into the opening.*